



27 MUSIC SQUARE EAST NASHVILLE

MARKET: NASHVILLE

SUBMARKET: MUSIC ROW

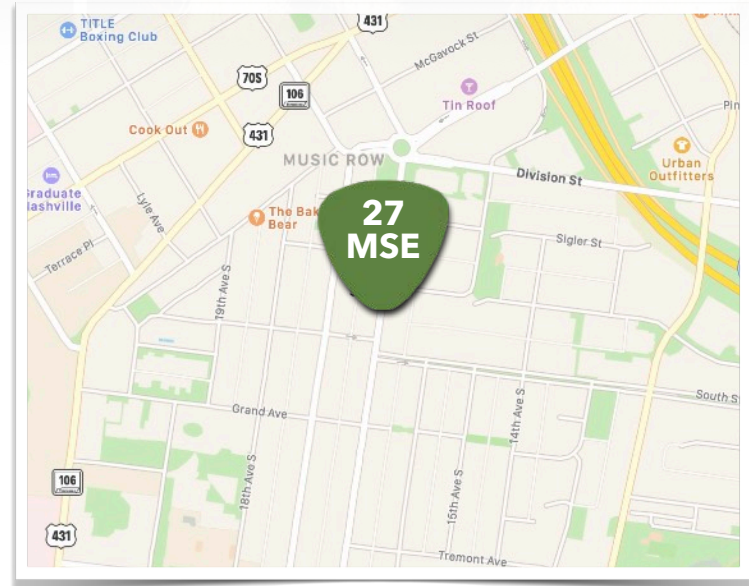
AVAILABLE SF: 4,500 SF

BUILDING SIZE: 4,500 SF total on two floors

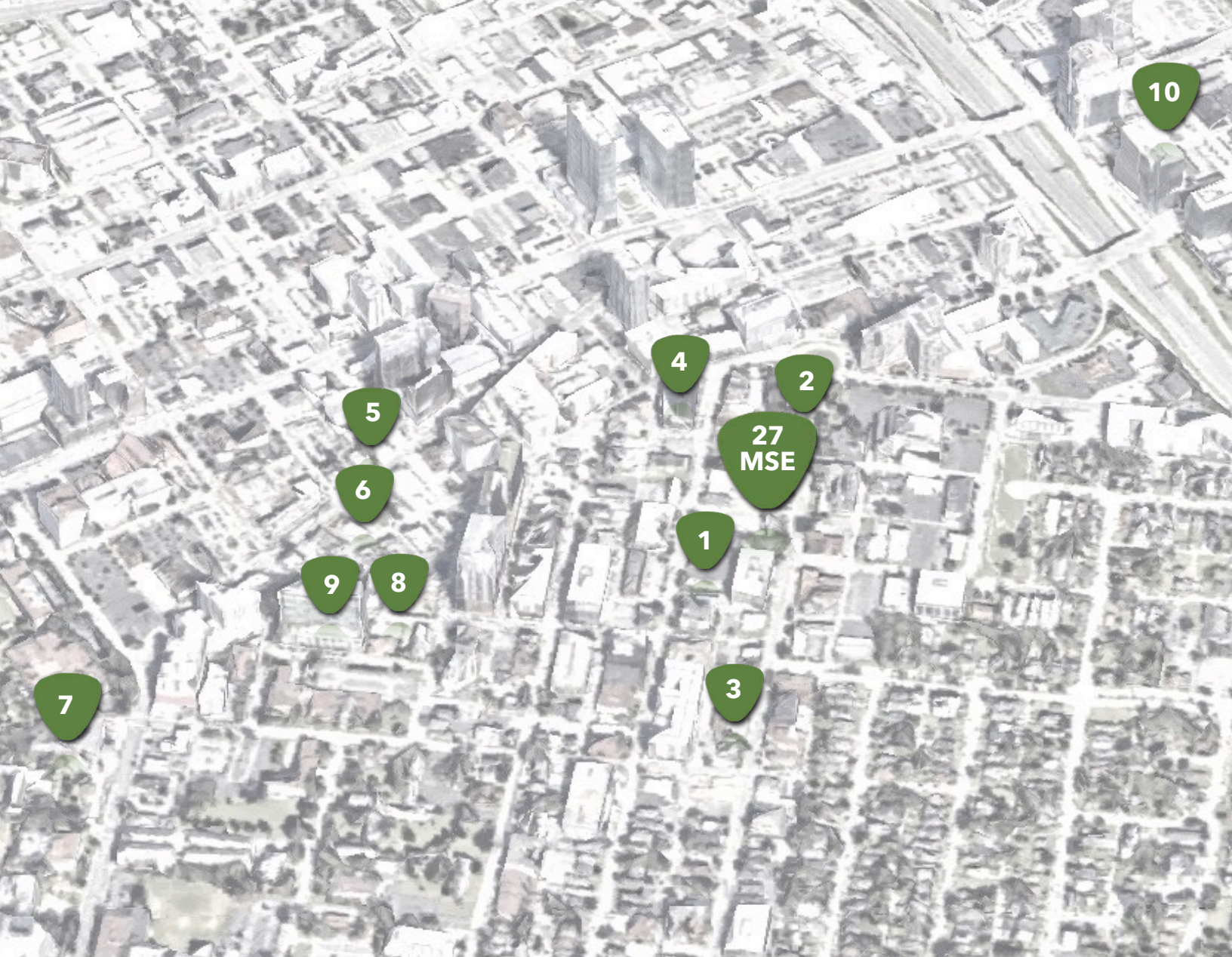
ASKING PRICE: \$2,295,000

SITE: 0.17 Acres

CROSS STREETS: Music Square East - Roy Acuff Pl



Available for the best in retail, hospitality, music, or office concepts. Zoned ORI (Office Residential Intensive). One block from Music Row Roundabout. Neighbors include RCA Studio B, Warner Chappell Music, Curb. Walking distance to the Gulch and Midtown.



Attractions and Office Buildings

1. RCA Studio B
2. Warner Chappell Music
3. Shakti Yoga
4. Virgin Hotel
5. Hattie B's
6. Hopsmith Tavern
7. Vanderbilt University
8. Moore Bldg
9. Adelia
10. Gulch

NEIGHBORHOOD	0.5 Mile	1 Mile
Residential Units	900 units	6,000 units
Restaurants	20	-
Hotels	3,000	-

NASHVILLE

MUSIC ROW



27MUSIC SQUARE EAST

Rendering

BUILDING DETAILS:

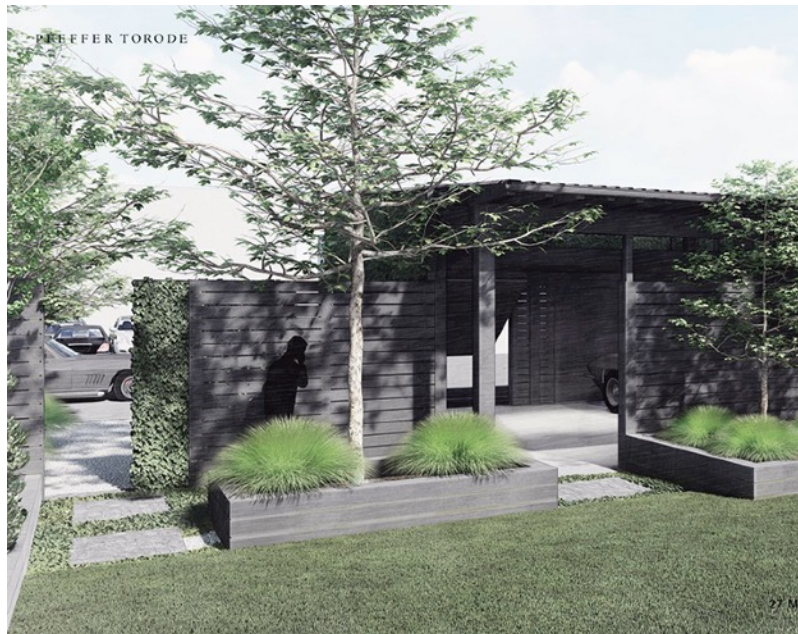
- + Built in 1966 for Owen Bradley's Decca Records, this property boasts authentic Nashville Music Row History. Neighbors include RCA Studio B and Warner Chappell Music amongst a myriad of other Music Row staples.
- + Less than 10 minute walk to over 20 Midtown restaurants and bars, 900 apartment units, and over 3,000 hotel rooms.
- + Structure of the building is CMU with a brick exterior offering a multitude of various layouts with ability to add skylight and abundant natural light.

27 MUSIC SQUARE EAST

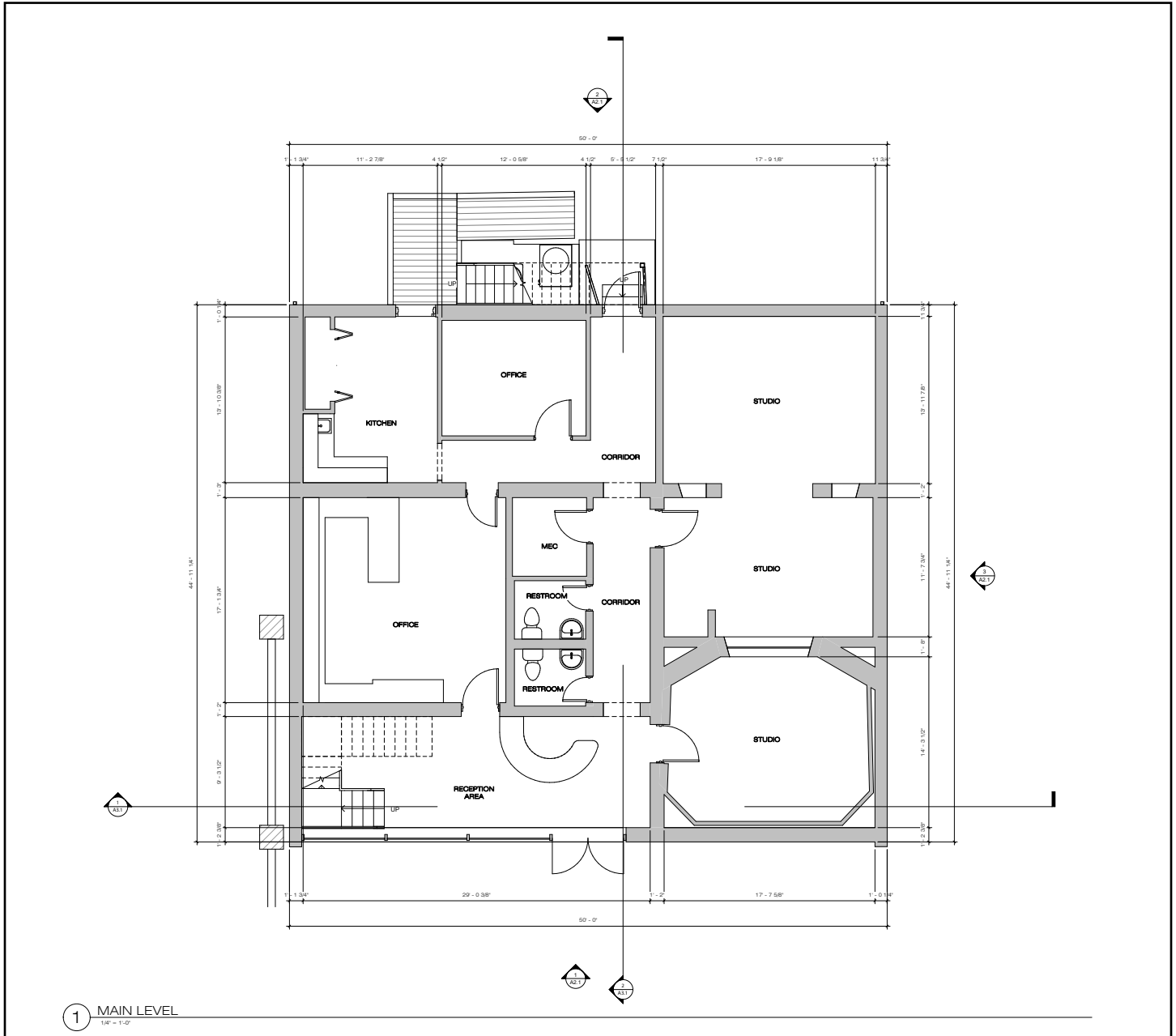
Renderings



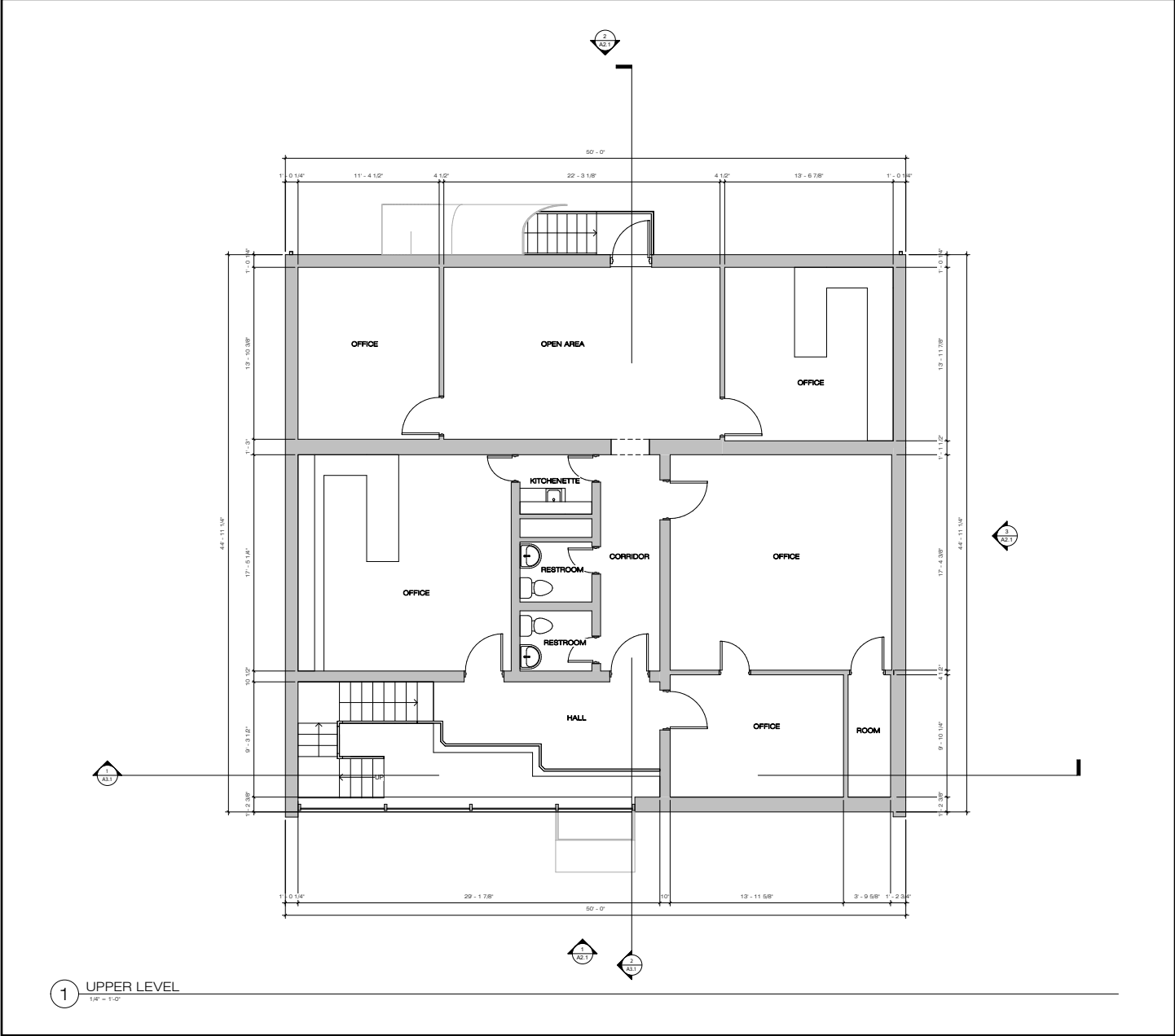
NASHVILLE MUSIC ROW



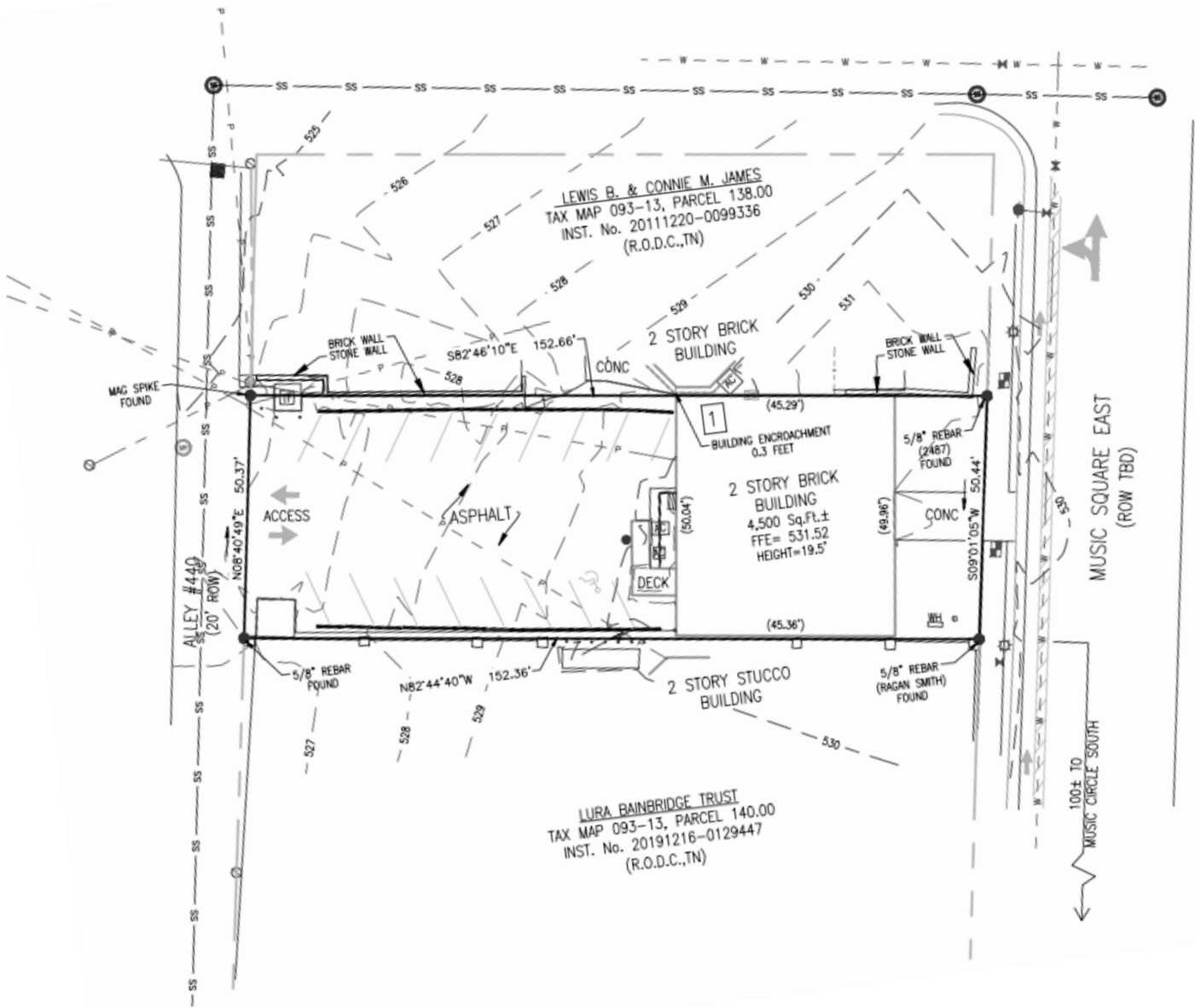
27 MUSIC SQUARE EAST



27 MUSIC SQUARE EAST



27 MUSIC SQUARE EAST



27MUSICSQUARE EAST NASHVILLE

contact us:

Stan Snipes, CCIM // President
Snipes Properties

○ 615.815.1613 M 615.364.6015
E ssnipes@snipes-properties.com
snipes-properties.com

David Creed Jr. // President
Creed Investment Company

○ 615.246.0222 M 615.712.4067
E david.creed@creedinvestment.com
creedinvestment.com

For Sale By Owner