

6th FLOOR PENTHOUSE | Office | FOR LEASE

MIDTOWN | NASHVILLE TN

Suite 600: ± 2,468 SF

Suite 601: ± 2,472 SF

Total: ± 4,940 SF
CONTIGUOUS

ORBISON BUILDING

1625 BROADWAY | NASHVILLE TN

 SNIPES
PROPERTIES

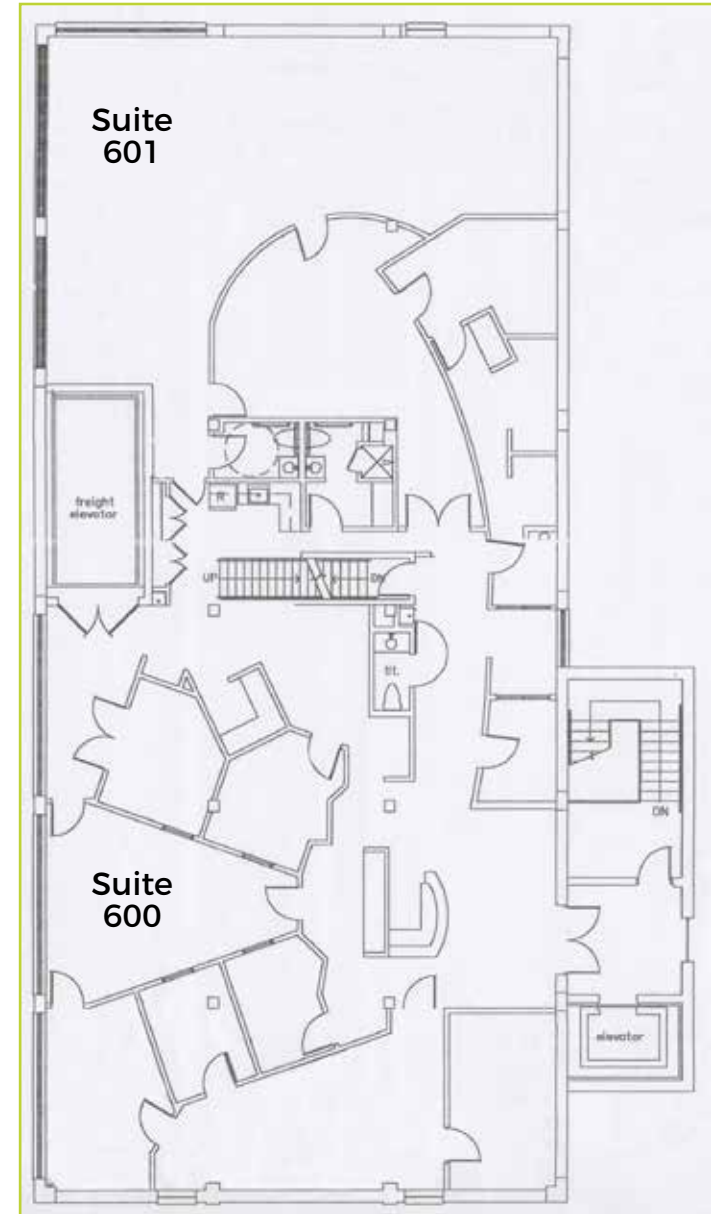


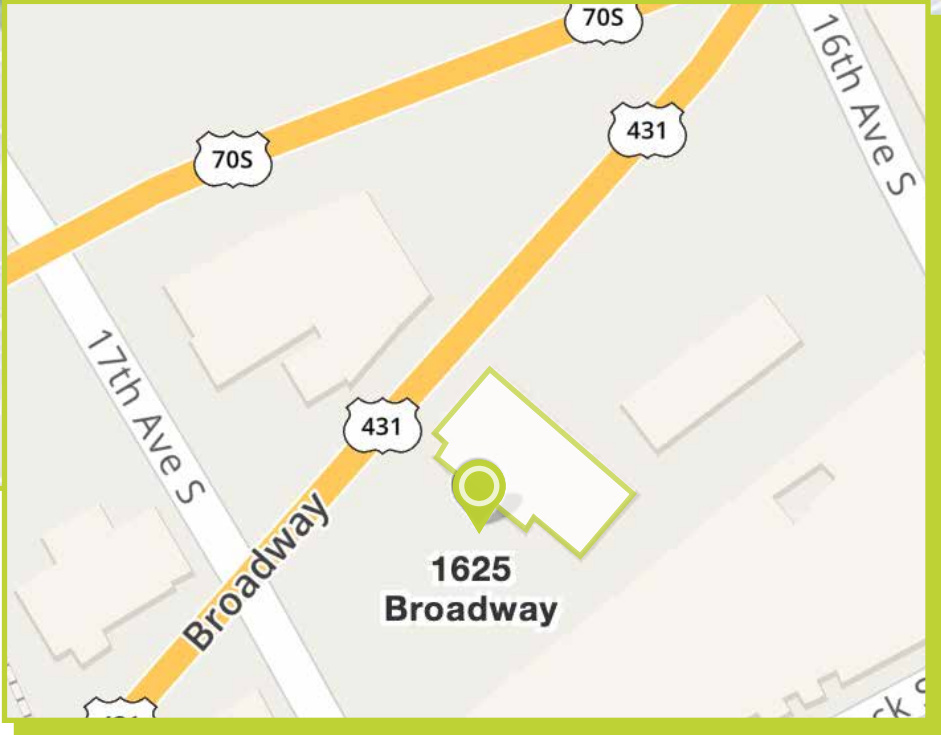
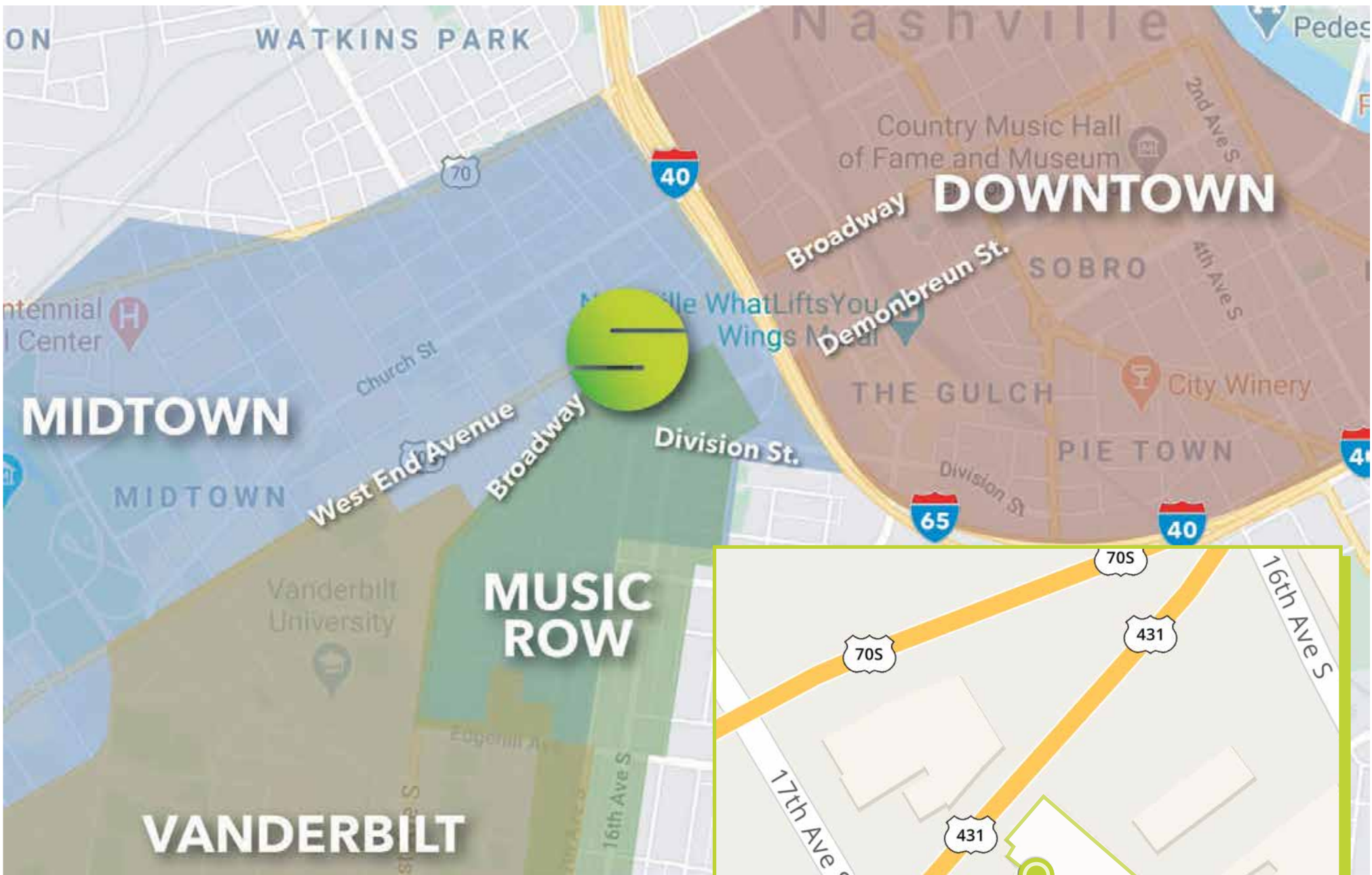
Amazing views of Nashville from the top floor of the Orbison Building.



ADDRESS: 1625 Broadway, Suite 600 and Suite 601 | Nashville TN

- Available Space: Suite 600 ± 2,468 SF | Suite 601 ± 2,472 SF
Contiguous ± 4,940 SF
- Open Creative Loft Office Space
- Available For Immediate Occupancy
- Asking Rate \$32 psf Gross Full Service
- 6th Floor With Amazing Views of Nashville
- ± 12' Exposed Ceilings
- Private Men's / Women's Restrooms
- 15 Parking Spaces Provided for 6th Floor,
Plus Common Visitor Parking





1625 **BROADWAY** | **NASHVILLE** TN



ATTRACTIONS



2 HATTIE B'S



4 BROADWAY BREWHOUSE



6 CAPRIOTTI'S SANDWICH SHOP



1 PATTERSON HOUSE



3 CHUEY'S



5 MIDTOWN TAVERN



7 GRABBAGREEN

HOTELS/APARTMENTS



2 HILTON GARDEN INN NASHVILLE VANDERBILTS



4 BRISTOL ON BROADWAY



6 VIRGIN HOTEL COMING 2020



1 SKYHOUSE NASHVILLE



3 HOME2 SUITE NASHVILLE VANDERBILT



5 COURTYARD BY MARRIOTT NASHVILLE VANDERBILT/WEST END

1625 **BROADWAY** | **NASHVILLE** TN

Stan Snipes, CCIM // President
Commercial Real Estate Advisors

📞 615.815.1613 📠 615.364.6015

✉ ssnipes@snipes-properties.com

snipes-properties.com



NO WARRANTY OR REPRESENTATION IS MADE TO THE
ACCURACY OR COMPLETENESS OF THE INFORMATION
CONTAINED IN THIS MATERIAL AND THE INFORMATION
HEREIN MAY BE SUBJECT TO CHANGE WITHOUT NOTICE.